

# The light, the Christmas light

Words Shirley Murray/Music Vivien Chiu

Tune: Sally

♩ = 112



1. The light, the Christ-mas light is  
door, the sta - ble door that  
star, the cos - mic star, the  
light has al - ways shone; the



born with-in the dark - ness, a glim - mer where the spark is that  
op - ens to all peo - ple, the search-ing and the hope - ful who  
point-er fly - ing so - lo that calls the wise to fol - low where  
faith we lodge our hope in will seek a door to op - en, a



Spi - rit will ig - nite: Christ Je - sus is this light, Christ Je - sus  
look and long for more: Christ Je - sus is this door, Christ Je - sus  
new ho - ri - zons are: Christ Je - sus is this star, Christ Je - sus  
star to light us on and draw a shin-ing thread, and draw a



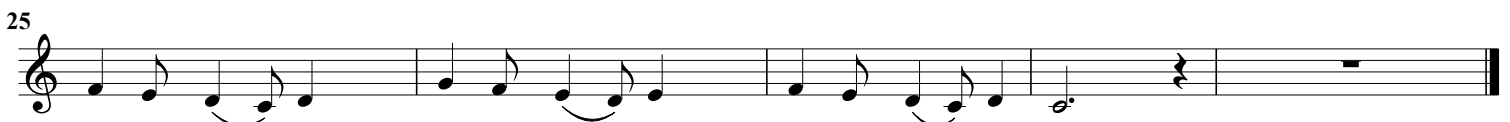
is this light, Christ Je - sus is this light, Christ Je - sus is this  
is this door, Christ Je - sus is this door, Christ Je - sus is this  
is this star, Christ Je - sus is this star, Christ Je - sus is this  
shin-ing thread, and draw a shin-ing thread, through all the year a -



light.  
door.  
star.  
- head.

2. The  
3. The  
4. The

And draw a shin-ing thread, through



all the year, through all the year, through all the year a - head.